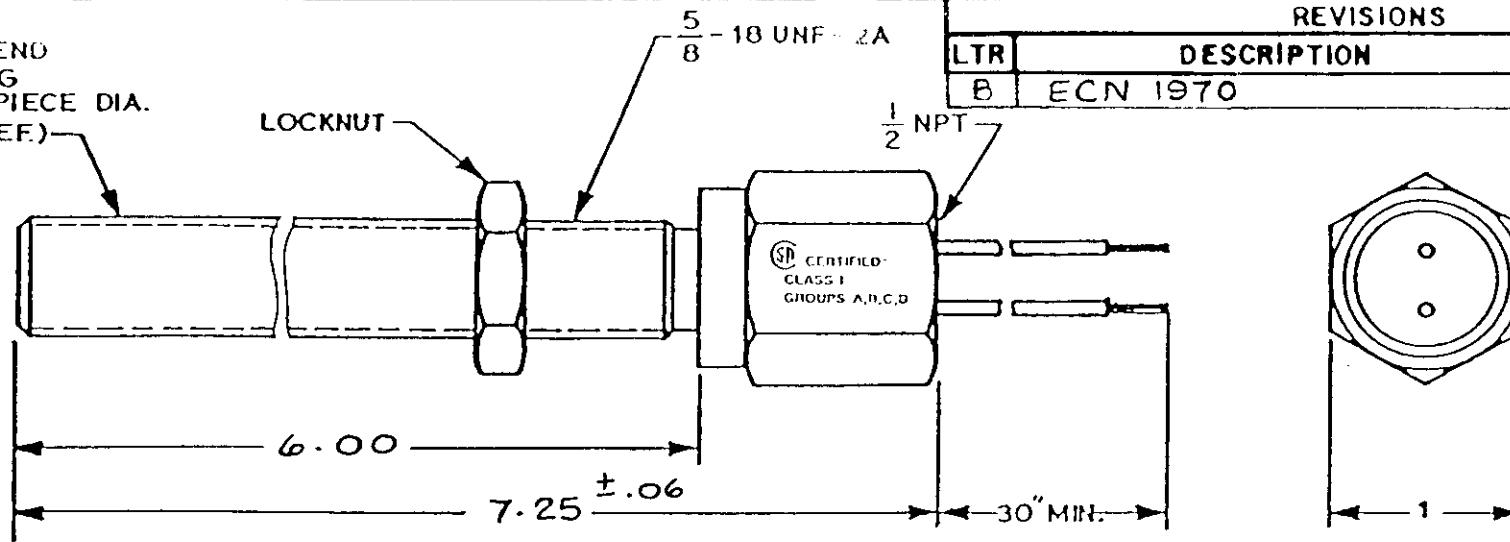


BLIND END HOUSING (POLE PIECE DIA. .094 REF.)



REVISIONS

LTR	DESCRIPTION	DATE	APPD
B	ECN 1970	1/8/96	Jac

TEMPERATURE RANGE	OUTPUT VOLTAGE (SEE NOTE 1)	DC RESISTANCE AT 75°F	INDUCTANCE AT 1 KHZ	OUTPUT LEADS (SEE NOTE 2)	INSULATION RESISTANCE AT 500 VDC
-65°F to +225°F	23-33V p-p	170-210 OHMS	29 MH. NOM.	AWG 18 TEFLON	100 MEGOHMS MIN. COIL TO HOUSING

NOTES:

- TESTED AT 1000 INCHES/SECOND WITH A 20 PITCH, 30 TOOTH GEAR, 0.005" CLEARANCE AND 100,000 OHMS.
- WITH APPROACH OF FERROUS METAL, WHITE LEAD IS POSITIVE WITH RESPECT TO BLACK LEAD.
- LEAD WIRE TEMPERATURE 400°F MAX.

CONSTRUCTION:

HOUSING- 303 STAINLESS STEEL
 POTTING- EPOXY RESIN

SD CERTIFIED
 CLASS I
 GROUPS A,B,C,D

UNLESS OTHERWISE SPECIFIED DIMENSIONS ARE IN INCHES TOLERANCES ARE

FRACT.	DEC.	ANGLES
± 1/64	.XXX ± .008 XX ± .01	± 1/2°

MATERIAL:
 P/L A8008915

FINISH:

DYNALCO

DRAWN I-VALDES	DATE 7-15-90
APPROVED	7-15-90

TITLE
 OUTLINE & SPECIFICATIONS
 M337 MAGNETIC PICKUP

SCALE	SIZE	DRAWING NUMBER	REV.
	A	8000337	E

This document, all information contained herein and all information related thereto, is the property of Dynalco Controls a unit of Mark Controls Corporation, is confidential to it and no part thereof nor any such information may be copied, disseminated or used in any manner whatsoever without the prior written consent of Dynalco and is to be returned to Dynalco upon request.

DO NOT SCALE THIS DRAWING

300993